



LEADERS IN INSTRUMENTATION AND ANCILLARY EQUIPMENT
FOR THE LIFTING INDUSTRY

210 SERIES



DIGILINK - "UNDERHOOK WEIGHING" - WIRELESS

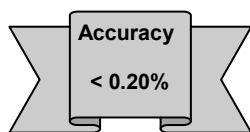
Designed and built to meet demanding applications in the workshop, factory or field—200 METRES RANGE.

Rugged lightweight alloy construction - 12 tonne link weighs only 1.9kg

- Standard range 5 to 150 tonne (up to 500 tonne)
- Shackle units to 500 tonne
- Accuracy < 0.20%
- Supplied with all you need to do the job
- Simple & Easy to use
- Clear easy to read calculator style remote control
- Hold function for peak load
- Tare function
- Programmable hand held unit
- Long life lithium batteries (50 hours minimum)
- Automatic power-down after 5 minutes in "Waiting" mode
- Housed and protected in a practical tough waterproof case*
- Cable version 205 Series available
- Designed for use with standard lifting shackles

* Up to 100 tonne *Portable weighing for: -*

- ◆ Load testing
- ◆ General loading
- ◆ Checking test weights
- ◆ Bollard pull testing
- ◆ Winch testing



RELIABILITY

DESIGNED & MANUFACTURED BY...

VERSATILITY

LOADWISE INTERNATIONAL LIMITED

SIMPLICITY

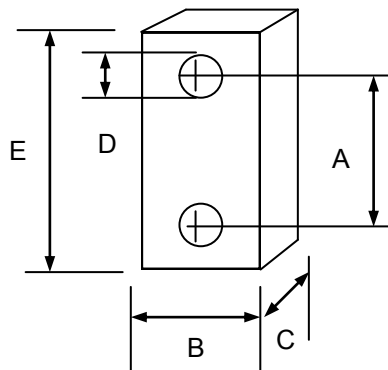




LEADERS IN INSTRUMENTATION AND ANCILLARY EQUIPMENT FOR THE LIFTING INDUSTRY

The *Loadwise Digilink* is a precision strain-gauged load cell constructed from high strength aluminium with an anodised finish to provide corrosion protection. Combining high quality, accuracy and reliability in a compact low weight unit. All the electronics are contained within the hand-held display controller, which includes a leather carry case and shoulder / hand straps. The unit is supplied with a third party test certificate; *Loadwise* recommend that units are checked for accuracy annually and offer a calibration service. The *Digilink* is self programmable for calibration under controlled conditions.

Dimensions and weights for standard models



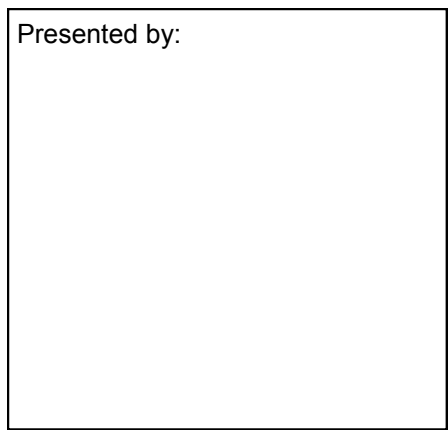
Shackles to 500 tonne

Capacity	A	B	C	øD	E	WEIGHT (kg)
Up to 5 tonne	108	105	41.3	30	164	1.4
12 tonne	120	105	41.3	38	210	1.9
25 tonne	131	125	58	53	255	4.0
35 tonne	147	135	58	60	305	5.0
50 tonne	170	150	78	73	345	9.0
100 tonne	228	220	120	100	455	27.0
150 tonne	258	260	123	120	520	40.0

250 & 500 tonne *Digilinks* are available on application

TECHNICAL SPECIFICATION

Display: LCD, 7mm digits, Dimensions: 150mm x 83mm x 35mm, Weight: 0.42kg
 Temperature range: Hand held -10°C to +55°C, Link -10°C to + 80°C
 Frequency: 433.92 MHz UK & Europe
 Proof load: 150% of maximum rated load (M.R.L.)
 Ultimate overload: 500% (M.R.L.)
 Accuracy: 0.20% Full scale deflection (F.S.D.)
 Hysteresis: < 0.1% of rated output (R.A.)
 Non-Linerarity: <0.1% R.A.
 Sensitivity: 1.5mV/V
 Excitation: 10VDC
 Power supply - Hand-held: 9V PP3 lithium battery giving 50 hours continuous use, with automatic power down (APD) after 5 minutes "waiting" mode.
 Power supply - Link: 2 x 3.6V lithium giving 150 hours of continuous use, APD 9 hrs.
 Environmental protection: Hand held IP65, Link IP66
 Controls: On/Off, Tare, Hold



LOADWISE INTERNATIONAL LIMITED
 50 Woolmer Way
 Bordon
 Hampshire
 GU35 9QF
 United Kingdom

Tel: +44 (0)1420 476500
 Fax: +44 (0)1420 479090
 sales@loadwise.co.uk
 www.hawkleygroup.com

Loadwise International has a policy of continuous product improvement and reserves the right to amend specifications without prior notice