

**LEADERS IN INSTRUMENTATION AND ANCILLARY EQUIPMENT
FOR THE LIFTING INDUSTRY**

MODEL 602b

WINCH MONITORING INDICATORS

LOADWISE WINCH MONITORING SYSTEMS

**Clear easy to read displays with 25mm digits
Rugged alloy housing**

- Full microprocessor control
- Hook load overload warning
- Rope line pull limit maximum warning
- Load tare facility
- Operator selectable units, Imperial or metric
- Alarm buzzer with override button



A RANGE OF HEAVY DUTY LOAD SENSORS

- ◇ Dynamometers - up to 100 mm rope diameter
- ◇ Marinised finish options - Galvanised & stainless steel
- ◇ Dynamometer mounting options
- ◇ Line-Rider with swivel arm mounting
- ◇ Foot mounted
- ◇ Slide-bar
- ◇ Rope anchor (Dead-end)
- ◇ Custom options available on application

Winch - Load & Distance

- ◇ Prevent overloads
- ◇ Monitor rope: -
 - * Distance/payout
 - * Depth

SIMPLE TO INSTALL

**No special equipment required
Full instructions provided to install & cali-
brate
User friendly software
Fully trained engineers available
World-wide support**



DESIGNED & MANUFACTURED BY...

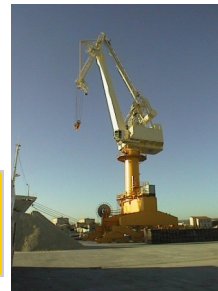
LOADWISE INTERNATIONAL LIMITED

RELIABILITY

VERSATILITY

SIMPLICITY





**LEADERS IN INSTRUMENTATION AND ANCILLARY EQUIPMENT
FOR THE LIFTING INDUSTRY**

For a fully featured indicator that offers a range of options the 600 series is the right choice; you can start with the full range of sensors, or choose to begin with a basic unit and add further sensors whenever you want. The 600 series uses the same microprocessor technology throughout the range; every unit is pre-programmed for all combinations, only the display label and sensors are changed to suit the application.

600 series display selection options: -

	1st load	2nd load	Load 1&2	Angle	Length/Distance	Radius	Telescopic	Lattice
601	- YES	NO	NO	NO	NO	NO	YES	YES
602	- YES	NO	NO	YES	NO	NO	YES	YES
602b	- YES	NO	NO	NO	YES	NO	YES	YES
603	- YES	YES	NO	NO	NO	NO	YES	YES
604	- YES	YES	NO	YES	NO	NO	YES	YES
605	- NO	NO	NO	YES	YES	YES	YES	NO
606	- NO	NO	NO	YES	NO	YES	NO	YES
607	- NO	NO	NO	YES	NO	NO	YES	YES
608	- YES	NO	NO	YES	YES	NO	YES	NO
609	- YES	NO	NO	YES	YES	NO	NO	YES
610	- YES	YES	NO	YES	YES	YES	YES	NO
611	- YES	YES	NO	YES	YES	YES	NO	YES
641*	- YES	YES	YES	NO	NO	NO	YES	YES

- Load indicators feature an adjustable rope limit and adjustable maximum load warning
- Angle & distance indicators have adjustable minimum & maximum warning limits
- Radius and length indicators have adjustable maximum warning limits
- Model 609 Features an automatic load limit change at a preset angle or radius

The 600 is usually combined with a Loadwise dynamometer load sensor to suit the rope diameter, line pull and application, various options are available e.g. line-rider or dead-end hoist rope anchor. Custom engineered load sensors are available on application. *Model 641 is typically specified for Marine Hoist cranes

Loadwise solid-state boom angle sensors are available for lattice boom cranes and cable reeling drums with integral boom length and angle sensors for telescopic cranes. Cable reeling drums include two slip rings each with double contacts for reliable continu-



Dynamometers



Load sensors



Anti 2 block - over-hoist kits

TECHNICAL SPECIFICATION

Display: LCD, 4.5 x 25mm digits. Horizontal format, optional backlight
 Dimensions: 233mm x 112mm x 92mm
 Weight: 1.5kg
 Temperature range: -30°C to +60°C – Reference: BS7262:1990 & SAE J159 USA
 Supply Voltage: 10 to 32V DC
 Current Drain: 500mA
 Relay Contacts (optional): 10Amps volt free
 Inputs Analogue: Up to 2 Load, 1 Angle & 1 Length
 Inputs Digital: Switching - Overhoist (Anti-2-Block)
 Enclosure sealing: IP65
 Boom length sensor accuracy +/- 5cm
 Boom angle sensor accuracy: +/- 0.1°
 Load accuracy +/- 2.5%
 Compliance with Health & safety requirements

Presented by:

LOADWISE INTERNATIONAL LIMITED
 50 Woolmer Way
 Bordon
 Hampshire
 GU35 9QF
 United Kingdom

Tel: +44 (0)1420 476500
 Fax: +44 (0)1420 479090
 sales@loadwise.co.uk
 www.hawkleygroup.com

Loadwise International has a policy of continuous product improvement and reserves the right to amend specifications without prior notice

