



LEADERS IN INSTRUMENTATION FOR THE LIFTING INDUSTRY

700 SERIES

OVERLOAD INDICATORS / LIMITERS

FOR LIFTING & ACCESS EQUIPMENT

Simple & Easy to use Electronic control unit
Clear easy to read display
Illuminated for day or night use
Rugged alloy housing
Meets all known standards

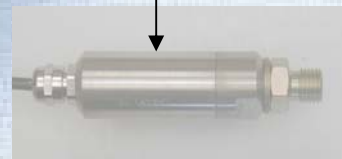
TOTAL MOMENT SYSTEM MONITORING

Hydraulic pressure in boom lift cylinders

LOAD SENSING SYSTEM MONITORING

Hydraulic pressure in fork lift/tilt cylinders

- Full L.E.D. green, amber & red array providing a continuous display of operating conditions
- Reduces the risk of injury
- Protects the equipment from the stress of over-loading
- Reduces the risk of damaging the lifted load
- Effective low cost protection



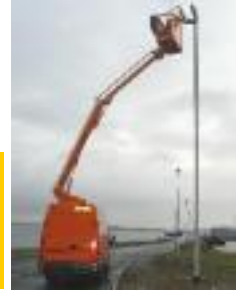
SIMPLE TO INSTALL

No special equipment required
Full instructions provided to install & calibrate
User friendly
Fully trained engineers available
World-wide support

DESIGNED & MANUFACTURED BY...

LOADWISE INTERNATIONAL LIMITED





LEADERS IN INSTRUMENTATION FOR THE LIFTING INDUSTRY

The 700 series is a simple device suitable for overload protection, it is usually combined with a Loadwise hydraulic pressure transducer according to the equipments maximum pressure rating, but it will operate with any suitable load cell. The control box contains the main electronics and calibration controls, dual duties are available to cater for rated capacity pressure variations and mast or boom extension.

Systems to suit: -

- FORK LIFT TRUCKS
- LORRY LOADER CRANES
- TELEHANDLERS
- ACCESS PLATFORMS

Optional

- ◇ Motion cut relay
- ◇ External audible alarm
- ◇ Override key-switch
- ◇ Extra display for second hydraulic control station
- ◇ Custom engineered versions



TECHNICAL SPECIFICATION

Display: Green, Amber & Red H.I. L.E.D.
Adjustable settings: Approach - 80% to 100%. Overload: 100% to 120%
Temperature range: -30° C to +50°C
Supply Voltage: 10 to 32V DC
Current Drain: 750mA
Enclosure sealing: IP67
Accuracy: +/- 3%
Optional relay Contacts: 10Amps at 12VDC, Audible alarm

Dimensions:
Display: 145mm x 110mm x 50mm
Control box: 120mm x 90mm x 90mm

Weights:
Display: 1.05kg

LOADWISE INTERNATIONAL LIMITED
50 Woolmer Way
Bordon
Hampshire GU35 9QF
United Kingdom

Tel: +44 (0)1420 476500
Fax: +44 (0)1420 479090
sales@loadwise.co.uk
www.hawkleygroup.com

Presented by:

Loadwise International has a policy of continuous product improvement and reserves the right to amend specifications without prior notice