



LEADERS IN INSTRUMENTATION FOR THE LIFTING INDUSTRY

520 SERIES

Data logging system - for use with 500 series RCI/L

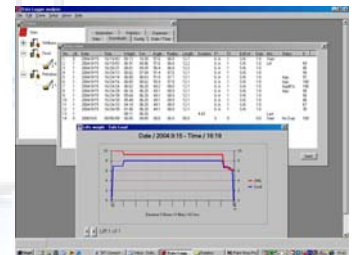
Crane operation log system

- ◆ Microprocessor system
- ◆ Comprehensive data stored
- ◆ 16MB memory minimum
- ◆ Real time clock
- ◆ RS232 input from RCI/L
- ◆ RS232 output to PC
- ◆ Regulated power supply with LED status lights
- ◆ Software - evaluation with graphical & text (table) format

SIMPLE TO INSTALL

No special equipment required
Self booting CD - User friendly software
Data logger to PC cable link included
Full instructions provided
Fully trained engineers available
World-wide support

RELIABILITY
VERSATILITY
SIMPLICITY



DESIGNED & MANUFACTURED BY...

LOADWISE INTERNATIONAL LIMITED





LEADERS IN INSTRUMENTATION FOR THE LIFTING INDUSTRY

The 520 series is a fully automatic microprocessor controlled data logging system designed to provide a clear and useful record of crane activity with the relevant rated capacity indicator settings and performance.

Each event is logged with its individual date and time, and a simple download link to a PC enables the data to be accessed and viewed with our built in software in graphic or table format. Table files can be saved and exported to a spreadsheet for further analysis and storage to suit individual requirements.

Interfacing with our 500 series rated capacity indicator the Loadwise data logger places key data in your hands.

Suitable for all crane types including: -

- TELESCOPIC CRANES
- LATTICE CRANES
- LOADER CRANES (KNUCKLE BOOM)
- CONTAINER HANDLING CRANES
- PORT CRANES
- SHIP-BOARD CRANES & WINCHES
- OFFSHORE CRANES



Key Features include: -

- Real time clock
- 16MB memory minimum
- Efficient data storage - Typically 6000 lifts/MB
- Built in graphics and text data evaluation software
 - Total lifts by month - annual view, histogram
 - Lifts by month - weekly view, histogram
 - Rated capacity & load against load & duration of lift, line graph
 - Data table displaying - Standard recorded data: -



Record number / Lift number / Date / Time / Weight of load lifted / Rated capacity / Boom angle / Hook radius / Boom length / Falls selected - main winch / Falls selected - auxiliary winch / Duty selected / Status of external input switches, e.g. override, axle locks / Status of warnings - Approach / Overload / Cut-out / %overload / Largest load in a lift record / Duration of the lift sequence

- Export data to a spreadsheet for alternative analysis & storage
- Customised options on application



TECHNICAL SPECIFICATION

Inputs: RS232 from 500 series R.C.I.
 Outputs: RS232 output via 9 pin 'D' connector & link cable (included with kit)
 Memory capacity: Standard 16MB (Non volatile), expandable
 Typical storage: 6000 lifts/MB
 Memory warning at 15MB
 L.E.D. data transmission status indication
 Temperature range: -20°C to +60°C - BS7262:1990. -30°C to +50°C - SAE J159 USA
 Supply Voltage: 9.5 to 30V DC (connect to 500 series R.C.I.)
 L.E.D. Power supply status
 Current Drain: 400 mA at 12VDC
 Enclosure sealing: IP65
 ISO 12482-1:1995, BS 7121-2:2003
 Compliance with Health & safety requirements: 93/68/EEC, 89/336 & 92/31/EEC, EN50081-1-1:1992, EN50082-1:1997 (500 Series)

Presented by:

LOADWISE INTERNATIONAL LIMITED
 50 Woolmer Way
 Bordon
 Hampshire
 GU35 9QF
 United Kingdom

Tel: +44 (0)1420 476500
 Fax: +44 (0)1420 479090
 sales@loadwise.co.uk
 www.hawkleygroup.com

Loadwise International has a policy of continuous product improvement and reserves the right to amend specifications without prior notice

